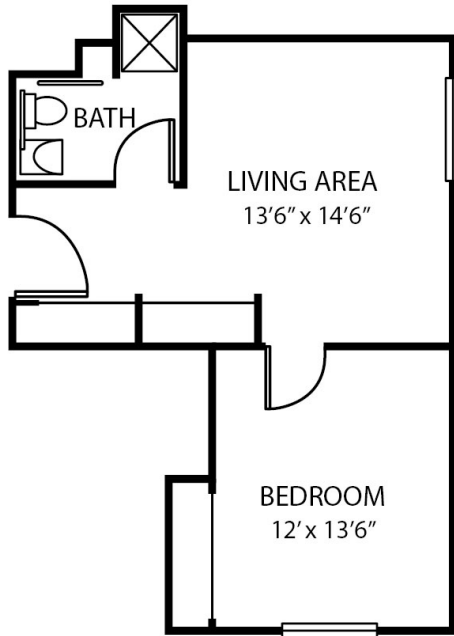


Whispering Pines Village



Firestone

1 BDR
540

Rate: \$4,370/mo

Amenities & Safety Features

Our thoughtfully designed apartments are packed with first-rate amenities to make sure you get the most out of living. This apartment features:

- Full-sized kitchens/kitchenette
- Spacious closets
- Balcony/Patio
- Privacy blinds
- Individual locked mailboxes
- Climate-control systems
- Safety rails in bathroom
- Smoke alarms
- Wheelchair accessible
- Emergency response system
- Sprinkler system

For more information, please call Samantha Nutter at 330-482-9400.

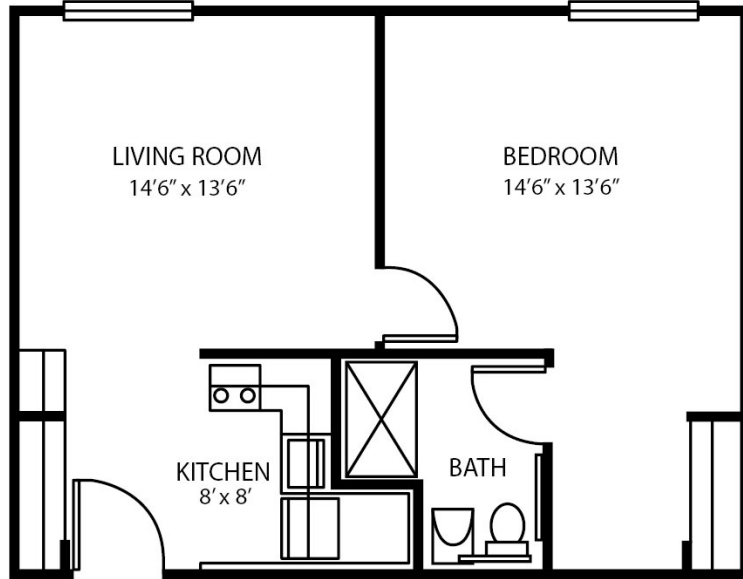
DISCOVER *the difference*

937 E. Park Ave, Columbiana, OH 44408
tel 330-482-9400 | fax 330-482-3226 | whisperingpines-village.com



▲ A CAPITAL SENIOR LIVING COMMUNITY

Whispering Pines Village



Muirfeild

Large 1 BDR
690

Rate: \$4,470/mo

Amenities & Safety Features

Our thoughtfully designed apartments are packed with first-rate amenities to make sure you get the most out of living. This apartment features:

- Full-sized kitchens/kitchenette
- Spacious closets
- Balcony/Patio
- Privacy blinds
- Individual locked mailboxes
- Climate-control systems
- Safety rails in bathroom
- Smoke alarms
- Wheelchair accessible
- Emergency response system
- Sprinkler system

For more information, please call Samantha Nutter at 330-482-9400.

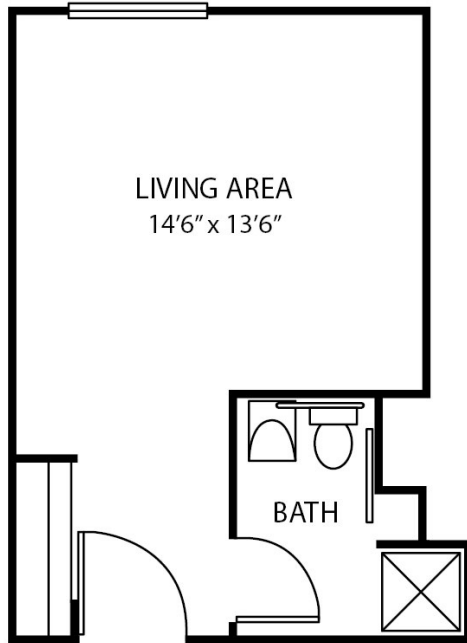
DISCOVER *the difference*

937 E. Park Ave, Columbiana, OH 44408
tel 330-482-9400 | fax 330-482-3226 | whisperingpines-village.com



▲ A CAPITAL SENIOR LIVING COMMUNITY

Whispering Pines Village



Oakmont

Studio
345

Rate: \$3,270/mo

Amenities & Safety Features

Our thoughtfully designed apartments are packed with first-rate amenities to make sure you get the most out of living. This apartment features:

- Full-sized kitchens/kitchenette
- Spacious closets
- Balcony/Patio
- Privacy blinds
- Individual locked mailboxes
- Climate-control systems
- Safety rails in bathroom
- Smoke alarms
- Wheelchair accessible
- Emergency response system
- Sprinkler system

For more information, please call Samantha Nutter at 330-482-9400.

DISCOVER *the difference*

937 E. Park Ave, Columbiana, OH 44408
tel 330-482-9400 | fax 330-482-3226 | whisperingpines-village.com



▲ A CAPITAL SENIOR LIVING COMMUNITY